

EVANSTON PARK - Colonial Home on ¼ Acre Block!

\$339,950

Located in the highly sought after suburb of Evanston Park, this three bedroom home is ideal for first home buyers and investors. The quiet, leafy location is close to schools and shops, and is only 2 minutes from the heart of Gawler.

Built in 1990, this Colonial-style property presents a practical layout with three bedrooms all containing built-in-robos, and the master bedroom with ensuite.

Featuring floating floors throughout an L-shaped lounge/ dining and central kitchen, the whole home is serviced by ducted evaporative air-conditioning and slow combustion heating.

The huge 1,145m² block boasts manicured gardens, extensive paving and pergola, and a massive 30 x 30 shed.

Currently rented at \$310 per week, this property will make a lovely home for the new owners or investors ??? call us today to arrange your private inspection.

RLA: 249396

Upcoming Inspections

Inspect by appointment, contact agent.

Land Size

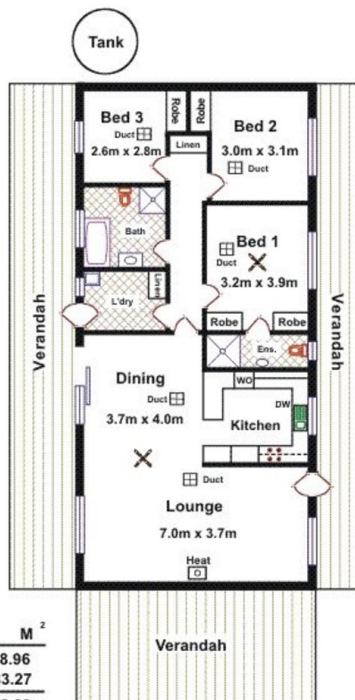
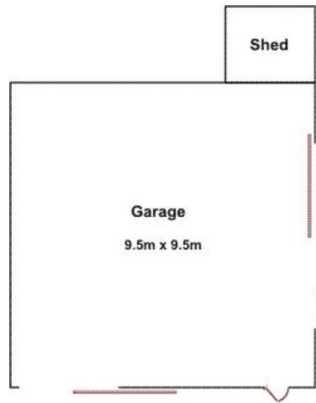
1145 m²

Kies Real Estate

enquiries@kies.com.au

08 8523 3777

3A Adelaide Road, Gawler 5118



Area	M ²
Living	118.96
Verandah	83.27
Total Approx	202.23

Please Note: Every care has been taken to verify the correctness of the areas and details used in this leaflet. No warranty or representation is given or made as to the correctness of the information supplied and neither the owners, illustrator nor the Agents can accept responsibility for errors or omissions. The sketch is for illustration purposes only and intending purchasers should satisfy themselves independently regarding sizes, layout and location of the property. Please check with local council that all structures are approved by council.

