



### LYNDOCH - A Beautiful Slice of History

\$249,950

Built in 1880 in the lovely town of Lyndoch, this classic Colonial Cottage is a beautiful slice of Barossa history. Located close to schools, parks, and shops, this charming home is wonderfully convenient, while still allowing you to breathe in that fresh country air.

The home itself features three bedrooms, with built in robe to the master, formal lounge and dining, and a second family / living room. There is also a beautiful open fireplace, perfect for keeping warm on those cold winter nights.

The low maintenance allotment boasts beautifully established cottage gardens with a great variety of trees and plants, and even includes an aviary! There is also a large double garage, and both front and rear access to the property.

???Christabelle Cottage??? is a wonderful example of the charm and character of yesteryear, just waiting for the right owners to add their own new chapters to its story. Call to arrange an inspection to suit.

RLA: 249396

### Upcoming Inspections

Inspect by appointment, contact agent.

### Land Size

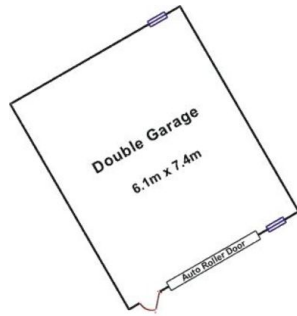
872 m2

### Kies Real Estate

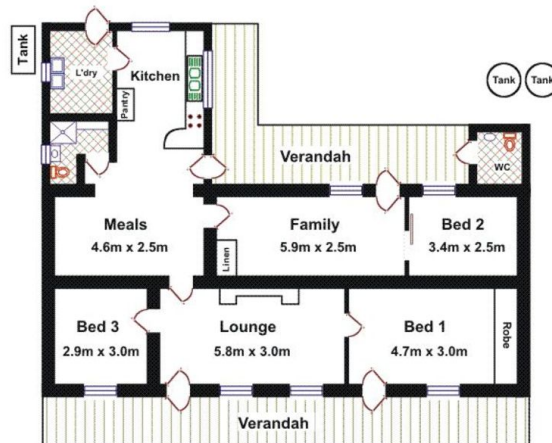
enquiries@kies.com.au

08 8523 3777

3A Adelaide Road, Gawler 5118



Area	M <sup>2</sup>
Living	132.51
Verandah	43.36
<b>Total Approx</b>	<b>175.87</b>



Please Note: Every care has been taken to verify the correctness of the areas and details used in this leaflet. No warranty or representation is given or made as to the correctness of the information supplied and neither the owners, illustrator nor the Agents can accept responsibility for errors or omissions. The sketch is for illustration purposes only and intending purchasers should satisfy themselves independently regarding sizes, layout and location of the property. Please check with local council that all structures are approved by council.

