

**HEWETT - Fabulous Family Home**

\$534,950

Set on 833m2 and featuring 4 double bedrooms and a studio loft, this home would accommodate the largest of families.

The elegance of this home is apparent from the moment you step through the door. The formal living room features vaulted ceilings and a large arched window, the large Farquhar kitchen overlooks the open plan meals/family area, separate formal dine and rumpus room with ornate pillars and rural views, bedrooms 3 and 4 have built in robes, while the master bedroom has a walk-in robe and ensuite.

Entertaining is an ease with the aid of the outdoor kitchen and large paved pergola area overlooking the majestic rural views. The studio loft is perfect for either a kid's games area, home theatre or parents retreat, and let's not forget the undercover outdoor spa!!

This big and beautiful home is serviced by ducted reverse cycle heating and cooling, 3 phase power, gas boosted solar hot water, grid connected solar energy system and the triple garage has direct access to the pergola area.

The established gardens are minimum fuss with maximum effect, fitted with a dripper and sprinkler system and the variety of fruit trees will keep the family happy throughout the year.

Seeing is believing ??? call today to arrange a private inspection at a time to suit you.

Upcoming Inspections

Inspect by appointment, contact agent.

Land Size

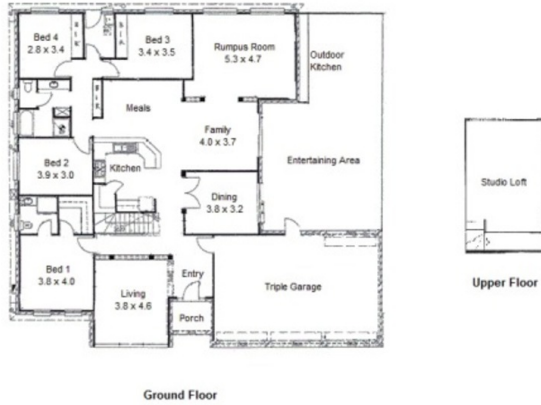
833 m2

Kies Real Estate

enquiries@kies.com.au

08 8523 3777

3A Adelaide Road, Gawler 5118



Note: Floor Plan is not to scale. Dimensions are shown as estimates only.

