



ROSEWORTHY - Clean Start

\$260,000

If you are looking for a rural family home with room to move then this property should be on your list. Located 10 minutes north of Gawler in the popular town of Roseworthy, this family home offers a good sized allotment of country living. Close to local schools and amenities, and with easy access to the Northern Expressway, this property is wonderfully convenient, but still offers the potential to breathe in that fresh country air.

This transportable home presents a practical layout with three bedrooms, including master bedroom with walk-in-robe, and bedrooms 2 & 3 containing built-in-robos. Featuring floating floors throughout the L-shaped lounge/dining and central kitchen, the whole home is serviced by reverse-cycle split system heating and cooling.

The huge 1,012m² block boasts established gardens, extensive paving, a pergola and a massive 30 x 30 shed.

If you are looking for a quality country home at an affordable price then look no further ??? call Kies today to arrange your private inspection.

RLA: 249396

Upcoming Inspections

Inspect by appointment, contact agent.

Land Size

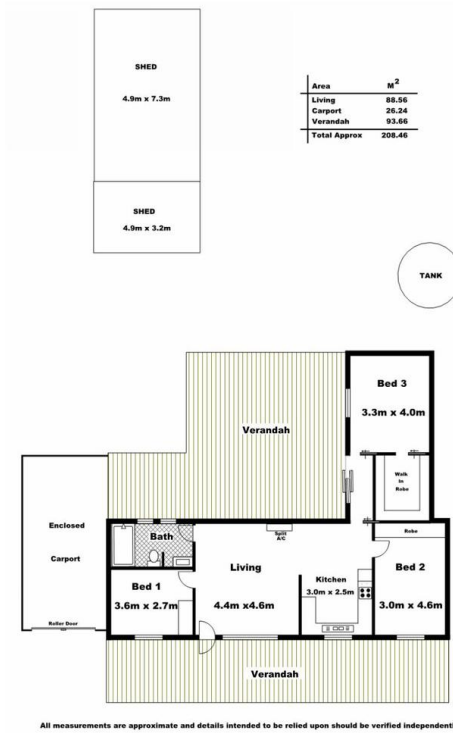
1012 m²

Kies Real Estate

enquiries@kies.com.au

08 8523 3777

3A Adelaide Road, Gawler 5118



All measurements are approximate and details intended to be relied upon should be verified independently.

