



FREELING - Glorious Country Living

\$399,950

If you are looking for a large family home on an old-fashioned quarter-acre block, then you can't go past this property. Located only 12 minutes north of Gawler in the increasingly popular town of Freeling, this 29 square home is set on 990m2, and offers quality country living. With easy access to the new expressways, you are only a short drive from both the beautiful Barossa Valley and Adelaide's CBD.

Built in 2003, this spacious home boasts four bedrooms, three of which include built-in-robos and ceiling fans, while the master features an ensuite and walk-in-robe.

The home comprises of a formal lounge and dining area, plus an open plan meals and rumpus area adjacent to the kitchen, which is complete with island bench, breakfast bar and ample cupboard space. The home is kept comfortable year-round with reverse-cycle ducted evaporative air conditioning.

Outside is impressive, with a double garage under the main roof and a spacious side and rear verandah, perfect for entertaining. Manicured gardens feature a good variety of fruit trees, and plenty of shedding will suit all of your storage needs. There is also side access to the property - ideal for a boat or caravan.

This lovely home won't disappoint - call Kies today to arrange your private inspection!

RLA: 249396

Upcoming Inspections

Inspect by appointment, contact agent.

Land Size

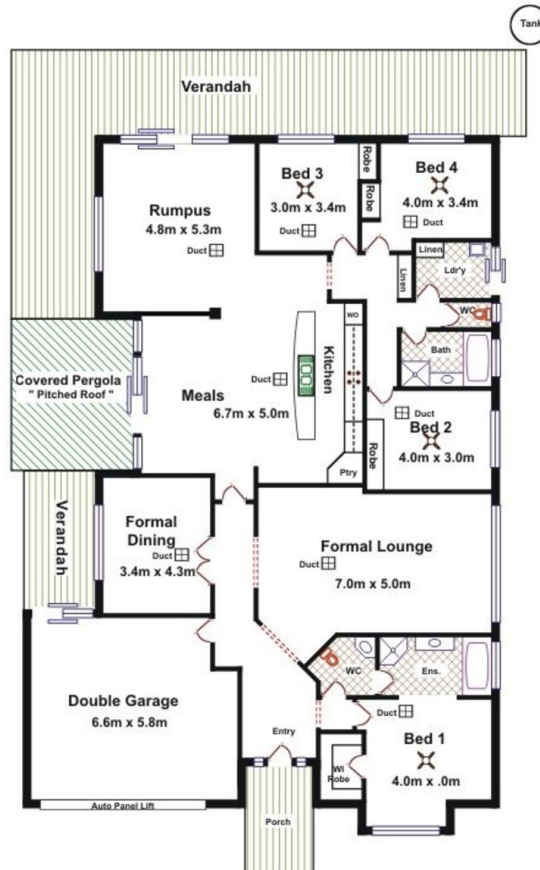
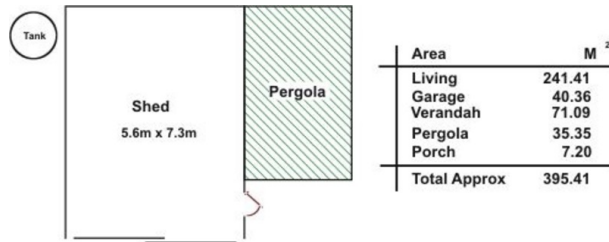
990 m2

Kies Real Estate

enquiries@kies.com.au

08 8523 3777

3A Adelaide Road, Gawler 5118



Please Note: Every care has been taken to verify the correctness of the areas and details used in this leaflet. No warranty or representation is given or made as to the correctness of the information supplied and neither the owners, illustrator nor the Agents can accept responsibility for errors or omissions. The sketch is for illustration purposes only and intending purchasers should satisfy themselves independently regarding sizes, layout and location of the property. Please check with local council that all structures are approved by council.

