



## ANDREWS FARM - Ready, Steady, Go!

\$269,950

Located in the heart of Andrews Farm on a 597m<sup>2</sup> block, this solid brick, three-bedroom house is ready to be occupied today. This tidy home is complete with modern kitchen that overlooks the comfortable family and dining areas. The separate lounge is great for time away from the kids, if needed, or for separate entertaining.

Featuring three spacious bedrooms, a large family bathroom, second toilet, and ducted evaporative cooling and gas heating to keep you comfortable all year round! This home also includes a 1.5kw solar system, garden shed, paved outdoor entertaining area under the main roof, and a side gate for access to park additional cars or a caravan. The neat and tidy yard is great for entertaining, or for running around with the kids!

This home is beautifully presented, and ready for you today. Inspection will not disappoint ??? call to arrange a time to suit.

RLA: 249396

## Upcoming Inspections

Inspect by appointment, contact agent.

## Land Size

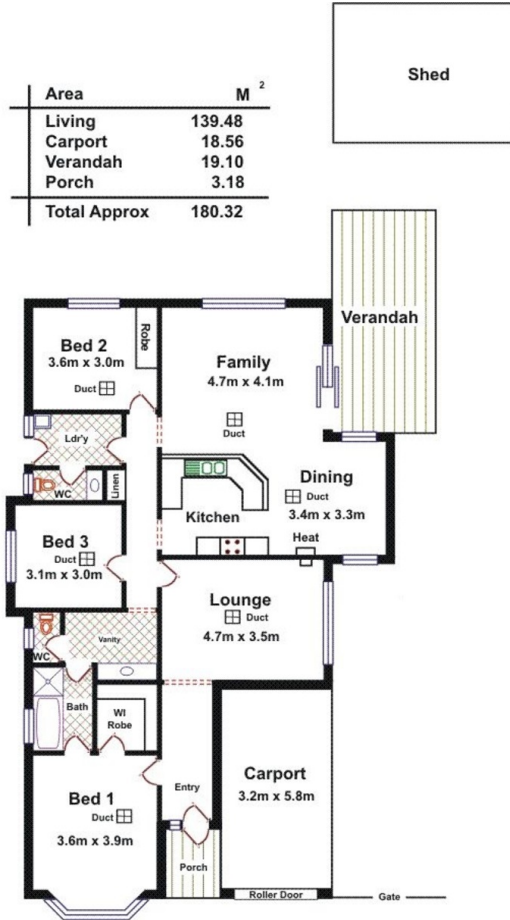
597 m<sup>2</sup>

## Kies Real Estate

[enquiries@kies.com.au](mailto:enquiries@kies.com.au)

08 8523 3777

3A Adelaide Road, Gawler 5118



**Please Note:** Every care has been taken to verify the correctness of the areas and details used in this leaflet. No warranty or representation is given or made as to the correctness of the information supplied and neither the owners, illustrator nor the Agents can accept responsibility for errors or omissions. The sketch is for illustration purposes only and intending purchasers should satisfy themselves independently regarding sizes, layout and location of the property. Please check with local council that all structures are approved by council.

