



ELIZABETH GROVE - Hot Property, Cool Price!

\$159,950

Attention, investors! This property, located in the suburb of Elizabeth Grove on a 602m² allotment, is ideal for those looking to add to their portfolio and generate a positive return.

Currently rented at \$215 per week to long-term tenants, this home offers three bedrooms, formal lounge, and a spacious, open kitchen and dining area. With side access and a substantial back yard, this is a wonderful first home or investment property. Call today to arrange an inspection at a time to suit.

RLA: 249396

Upcoming Inspections

Inspect by appointment, contact agent.

Land Size

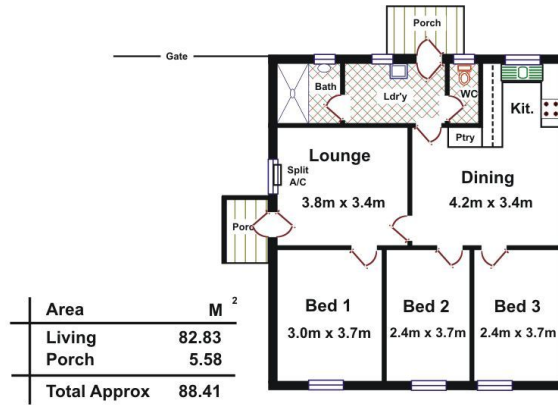
602 m²

Kies Real Estate

enquiries@kies.com.au

08 8523 3777

3A Adelaide Road, Gawler 5118



Please Note: Every care has been taken to verify the correctness of the areas and details used in this leaflet. No warranty or representation is given or made as to the correctness of the information supplied and neither the owners, illustrator nor the Agents can accept responsibility for errors or omissions. The sketch is for illustration purposes only and intending purchasers should satisfy themselves independently regarding sizes, layout and location of the property. Please check with local council that all structures are approved by council.

