



## COCKATOO VALLEY - Rare Find Found

\$529,950

Situated on the edge of the suburbs in beautiful Cockatoo Valley, you will enjoy the rural setting of this property with its tall trees, set well back from the roadway to provide fantastic privacy. Beautifully presented with the interior totally renovated, the home is positioned to make the most of the serene countryside, and the established front gardens of the two-acre property blend seamlessly with the natural landscape.

The home includes four bedrooms, with an ensuite and walk-in-robe in the master bedroom. The spacious 3-way family bathroom is situated between bedrooms 2, 3 and 4, away from the family area.

The brand new kitchen is every home cook's dream, with vast amounts of cupboard space, and stainless steel appliances, including dishwasher. The open plan living and dining area feature new floating floors and raked ceilings, and the home is serviced by a massive slow combustion heater, and ducted evaporative cooling system.

Once outside you are greeted by a homestead style front verandah, and a sizable back pergola entertaining area. Other notable features include horse stables and a massive 7m x 20m shed with bathroom facilities.

All this in such a picturesque location - this truly is a rare find! Call today to arrange your private inspection at a time to suit.

RLA: 249396

## Upcoming Inspections

Inspect by appointment, contact agent.

## Land Size

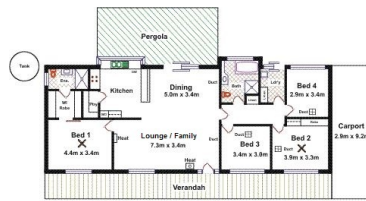
2 m2

## Kies Real Estate

[enquiries@kies.com.au](mailto:enquiries@kies.com.au)

08 8523 3777

3A Adelaide Road, Gawler 5118



Area	M
Living	152.23
Carport	26.68
Verandah	36.88
Total Approx	215.79

**Please Note:** Every care has been taken to verify the correctness of the areas and details used in this brochure. No warranty or representation is given or made as to the correctness of the information supplied and neither the owners, franchise nor the Agents can accept responsibility for errors or omissions. The search is for information purposes only and intending purchasers should verify themselves independently regarding size, layout and location of the property. Please check, with local council, that all structures are approved by council.

**Stables**  
7.0m x 3.8m

**Shed**  
7.0m x 20.0m

