



## **GAWLER SOUTH - Old World Charm + Modern Living**

\$489,950

Set on a superb 1,010m<sup>2</sup>, this 1905 Bluestone Slate Villa showcases its stunning heritage throughout, with ornate ceilings and the finest of fixtures. Boasting four bedrooms, 13ft ceilings, polished floorboards and slate floors, the original stone home has been seamlessly extended to offer an impressive 26 squares of living space. The modern feel of the open plan family, dining and rumpus room is beautifully balanced by the historic character of the working fireplaces, original wood stove, and cellar.

Outside you will find a neat courtyard, a massive 16m x 6m shed to house all of your toys, plus a 10m x 5m workshop. The property also has the added bonus of laneway access.

If you are looking for an old-world home on an old-fashioned ?quarter acre? then look no further ? this property will be hard to beat. Call Kies to arrange your private inspection at a time to suit.

RLA: 249396

## **Upcoming Inspections**

Inspect by appointment, contact agent.

## **Land Size**

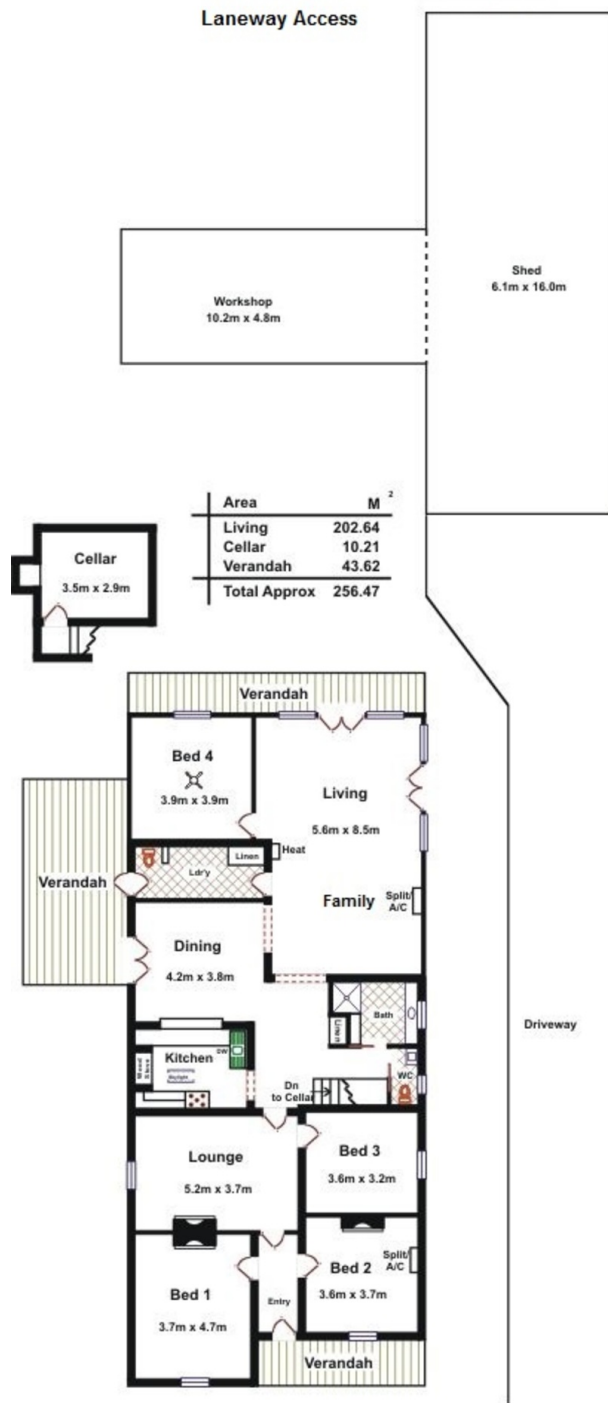
1010 m<sup>2</sup>

## **Kies Real Estate**

[enquiries@kies.com.au](mailto:enquiries@kies.com.au)

08 8523 3777

3A Adelaide Road, Gawler 5118



Please Note: Every care has been taken to verify the correctness of the areas and details used in this leaflet.

