



LYNDOCH - Complete It and Enjoy It

\$359,950

Set on over half an acre (2,010m²) this blank canvas offers the luxury to complete the landscaping just the way you like.

The family sized home features four bedrooms, master with walk-in robe and ensuite, formal lounge and an open plan kitchen/family/dine that spills onto the undercover outdoor entertaining area. It has also recently received a fresh coat of paint both inside and out, and awaits your choice of flooring in the main living area and bedrooms.

With all the extras already incorporated, including reverse cycle ducted heating and cooling, in-ground aboveground salt chlorinated swimming pool, single carport under the main roof, and two sheds of 5.4m x 6.1m and a 5.8m x 3.5m respectively, this offering boasts the features of a great family home.

With the potential to sub-divide the allotment (STCC), your options are bountiful.

Call to arrange a private inspection at a time to suit.

RLA: 249396

Upcoming Inspections

Inspect by appointment, contact agent.

Land Size

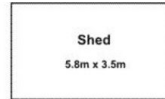
2010 m²

Kies Real Estate

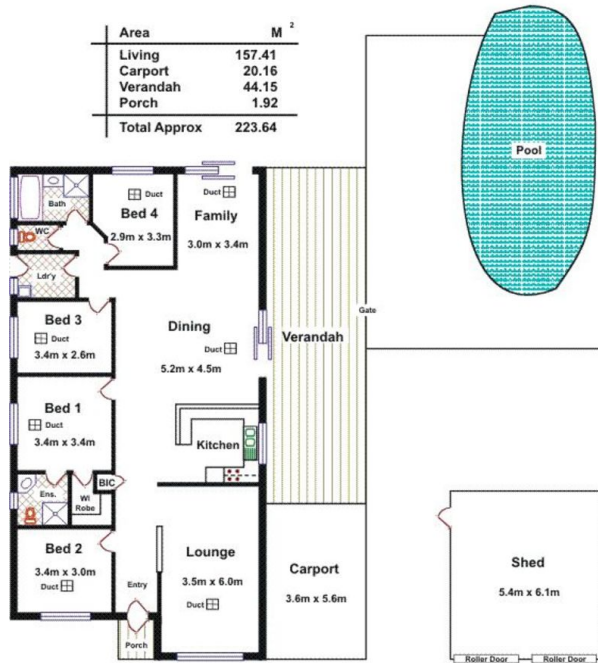
enquiries@kies.com.au

08 8523 3777

3A Adelaide Road, Gawler 5118



Area	M ²
Living	157.41
Carport	20.16
Verandah	44.15
Porch	1.92
Total Approx	223.64



Please Note: Every care has been taken to verify the correctness of the areas and details used in this leaflet. No warranty or representation is given or made as to the correctness of the information supplied and neither the owners, illustrator nor the Agents can accept responsibility for errors or omissions. The sketch is for illustration purposes only and intending purchasers should satisfy themselves independently regarding sizes, layout and location of the property. Please check with local council that all structures are approved by council.

