



ELIZABETH PARK - A Tidy Investment

\$199,950

This solid brick home certainly is a neat find! Set on a large 770m², this 1960's built home offers more than expected upon first glance.

The formal entry, under the front verandah, opens onto the L-shaped lounge/dining area and leads to the walk-through kitchen ? offering ample bench space, overhead cupboards and a view of the backyard (which could use a bit of landscaping ingenuity). Four bedrooms, the main bathroom and separate toilet are located away from the living area, with bedroom 4 boasting built-in robe.

The back verandah has been extended to provide an undercover outdoor entertaining area that is partially enclosed on two sides, and there is also a double carport spanning a huge 6.2m x 10.1m, a garden shed, and two wall unit air-conditioners that service the home.

Call today to arrange an inspection at a time to suit.

RLA: 249396

Upcoming Inspections

Inspect by appointment, contact agent.

Land Size

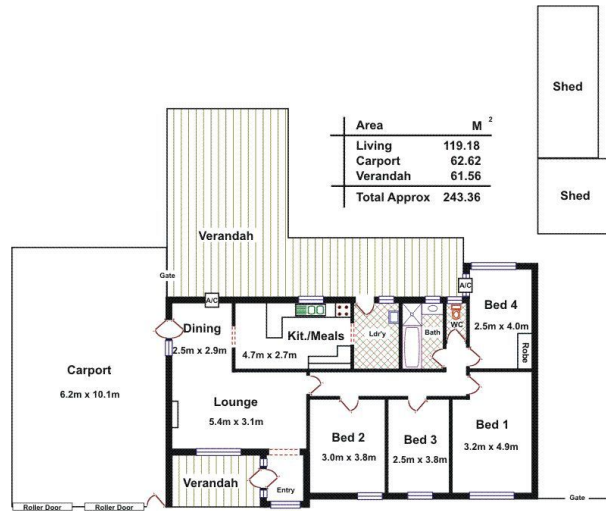
770 m²

Kies Real Estate

enquiries@kies.com.au

08 8523 3777

3A Adelaide Road, Gawler 5118



Please Note: Every care has been taken to verify the correctness of the areas and details used in this leaflet. No warranty or representation is given or made as to the correctness of the information supplied and neither the owners, illustrator nor the Agents can accept responsibility for errors or omissions. The sketch is for illustration purposes only and intending purchasers should satisfy themselves independently regarding sizes, layout and location of the property. Please check with local council that all structures are approved by council.

