



CRAIGMORE - A Real Gift!

\$384,950

This immaculately presented family home is set on a generous 595m² allotment, with easy access to major roads and public transport. Located in a quiet cul-de-sac, this prestigious corner property is only a stone's throw from six quality schools, the new Blakes Crossing village centre and only five minutes from Munno Para Shopping centre.

Boasting four sizeable bedrooms, including bedroom 3 with built-in-robe, and the bright, airy master with bay window, large walk in robe, and ensuite, there is more than enough room for the growing family.

The home comprises of a formal lounge, an open plan dining and family/living area adjacent to the kitchen, which is complete with breakfast bar, quality stainless steel appliances, and ample cupboard space. With all this plus servicing by ducted natural gas heating and evaporative air-conditioning, this fantastic find is the gift that keeps on giving!

Outside is also impressive, offering a double garage with through-access, and wonderful manicured gardens for the kids to play in, while you keep them in sight from beneath the spacious pitched-roof verandah.

Opportunities to purchase quality properties such as this on a large parcel of land rarely arise and this one won't disappoint. Call Kies today to arrange your private inspection!

RLA: 249396

Upcoming Inspections

Inspect by appointment, contact agent.

Land Size

595 m²

Kies Real Estate

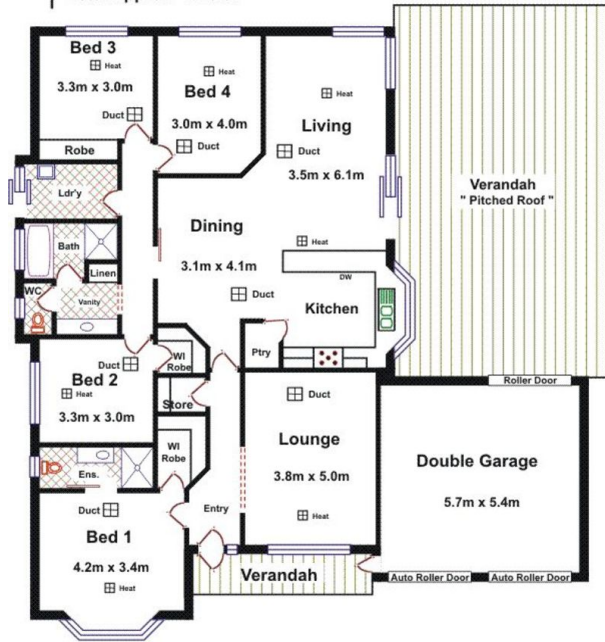
enquiries@kies.com.au

08 8523 3777

3A Adelaide Road, Gawler 5118

Shed

Area	M ²
Living	170.03
Garage	35.64
Verandah	74.24
Total Approx	279.91



Please Note: Every care has been taken to verify the correctness of the areas and details used in this leaflet. No warranty or representation is given or made as to the correctness of the information supplied and neither the owners, illustrator nor the Agent accept responsibility for errors or omissions. The sketch is for illustration purposes only and intending purchasers should satisfy themselves independently regarding sizes, layout and location of the property. Please check with local council that all structures are approved by council.

