



REID - Living in the Perfect Location

\$414,950

If you are looking for a large family home on an old-fashioned sized block, then you can't go past this property. Located in a quiet, newly established development, this 25 square home is set on a 715m2 corner allotment and offers quality family living, with local schools and shops only a 5 minute drive away. And with easy access to the new expressways, you are only a short drive from both the beautiful Barossa Valley and Adelaide's CBD.

This newly built, well-presented home boasts five bedrooms, four of which include built in robes, while the master includes walk in robe and ensuite.

The home comprises of a formal lounge/home theatre, large family room, plus an open plan meals and living area adjacent to the stunning galley kitchen, complete with breakfast bar, quality stainless steel appliances, and ample cupboard space. The home is heated and cooled via ducted reverse cycle air-conditioning with eight zones, and the massive 3.5kw solar system will help to keep your energy bills down.

Outside is impressive with a double garage, and a spacious undercover alfresco area. The manicured gardens feature a variety of trees, garden shed, and side access to the property.

Perfectly positioned, and with more than enough space to fit the whole family, this home won't disappoint - call Kies Real Estate today to arrange your inspection!

RLA: 249396

Upcoming Inspections

Inspect by appointment, contact agent.

Land Size

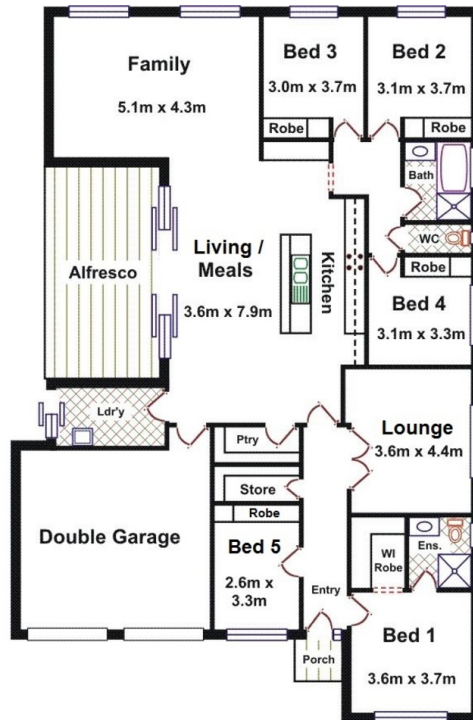
715 m2

Kies Real Estate

enquiries@kies.com.au

08 8523 3777

3A Adelaide Road, Gawler 5118



Please Note: Every care has been taken to verify the correctness of the areas and details used in this leaflet. No warranty or representation is given or made as to the correctness of the information supplied and neither the owners, illustrator nor the Agent accept responsibility for errors or omissions. The sketch is for illustration purposes only and intending purchasers should satisfy themselves independently regarding sizes, layout and location of the property. Please check with local council that all structures are approved by council.

