



LYNDOCH - Top Spot

\$339,950

If you are looking for a rural family home with room to move then this property should be on your list. Located on the edge of the beautiful Barossa Valley in the town of Lyndoch, this property is conveniently close to schools, parks, and shops but still offers the potential to breathe in that fresh country air.

Built in 2010, this home has been tastefully decorated and contains all the features you would expect in a modern home. The kitchen is at the heart of the home, overlooking the family and dining areas. Boasting plenty of cupboard space, stainless steel appliances and a large breakfast bar, the whole family will be able to gather here and lend a hand at meal times.

The bedrooms are located off a separate hallway, along with the family bathroom, and all are of a generous size with the master including walk-in robe and ensuite.

The gardens have been well planned and neatly established, with a fantastic lawn area and a variety of shrubs. The house also features split system air conditioning, and a 2.5kw solar system helps to reduce your electricity bills.

This is an excellent family home in a sought after location. Call Kies today to arrange your private viewing!

RLA: 249396

Upcoming Inspections

Inspect by appointment, contact agent.

Land Size

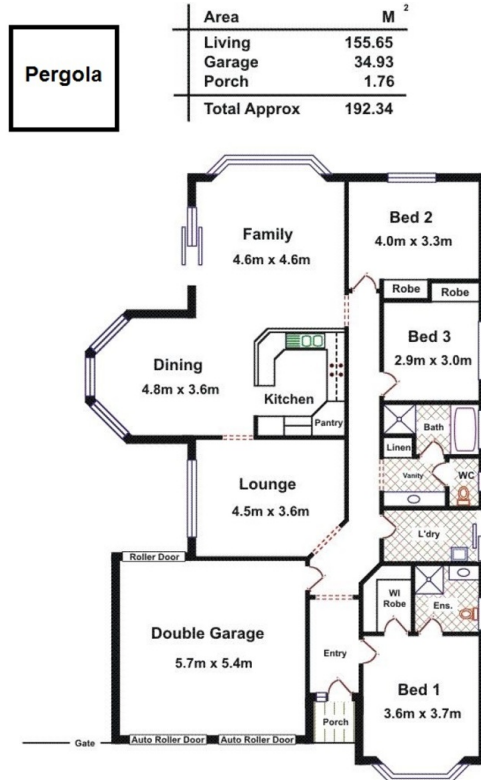
545 m2

Kies Real Estate

enquiries@kies.com.au

08 8523 3777

3A Adelaide Road, Gawler 5118



Please Note: Every care has been taken to verify the correctness of the areas and details used in this leaflet. No warranty or representation is given or made as to the correctness of the information supplied and neither the owners, illustrator nor the Agents can accept responsibility for errors or omissions. The sketch is for illustration purposes only and intending purchasers should satisfy themselves independently regarding sizes, layout and location of the property. Please check with local council that all structures are approved by council.

