

**HEWETT - A Gem!**

\$384,950

This unique property is located in the incredibly popular suburb of Hewett surrounded by other new, quality homes, and within walking distance to local schools, shops and parks.

Situated on a 600m² allotment this home is ideal for the growing family. Immaculately presented the home boasts 3 bedrooms, including a very spacious master with walk-in-robe and ensuite. Bedrooms 2 and 3 offer plenty of room, and are set away from the main living areas along with the large family bathroom.

Upon entry you are greeted by the formal lounge which flows onto the open plan meals and family living area adjacent to the kitchen filled with quality appliances, and complete with breakfast bar and ample cupboard space.

The home is serviced by reverse cycle ducted air conditioning for all year comfort and is complete with quality fixtures and fittings throughout.

Outdoors is just as impressive with a double garage under main roof with internal access a spacious side veranda perfect for entertaining, surrounded by established gardens for low maintenance living.

The opportunity to own a quality home in a fantastic location that offers access to all amenities is rare. You don't want to miss it so be quick and book your private inspection today!

Upcoming Inspections

Inspect by appointment, contact agent.

Land Size

600 m²

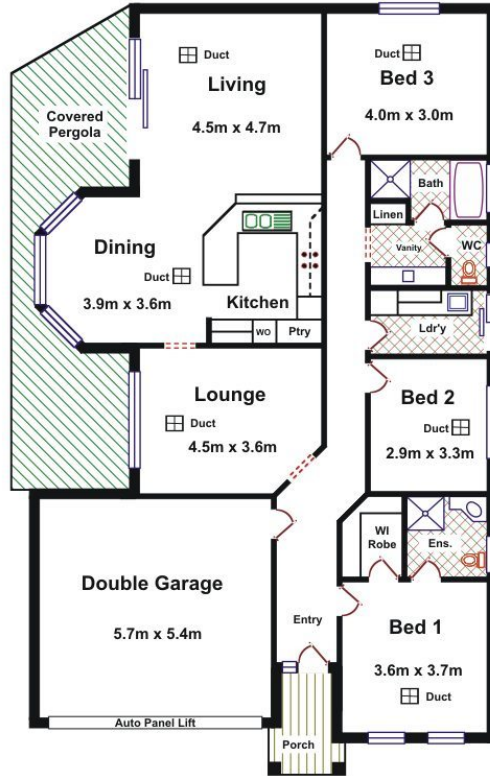
Kies Real Estate

enquiries@kies.com.au

08 8523 3777

3A Adelaide Road, Gawler 5118

Area	M ²
Living	151.87
Garage	35.04
Porch	3.82
Total Approx	190.73



Please Note: Every care has been taken to verify the correctness of the areas and details used in this leaflet. No warranty or representation is given or made as to the correctness of the information supplied and neither the owners, illustrator nor the Agent accept responsibility for errors or omissions. The sketch is for illustration purposes only and intending purchasers should satisfy themselves independently regarding sizes, layout and location of the property. Please check with local council that all structures are approved by council.

