

**GOLDEN GROVE - Set your sights on your new Home!**

\$354,950

Perfectly positioned on a corner block in a no-through road, this immaculate home is ideal for the young family. Everything you need is all here in Golden Grove, a suburb well known for its leafy streets and sense of community. You are spoilt for choice with numerous high-quality schools close by and Tea Tree Plaza is less than 10 minutes down the road.

The home itself has been meticulously cared for, boasting 3 bedrooms (two with built-in robes), and a practical family bathroom. There will be no fights over who has the remote, with two separate living areas providing plenty of space for everyone. The beautiful kitchen is central to the home and features all the mod-cons you would expect; including dishwasher, new stainless steel appliances and walk-in pantry. The home is serviced with evaporative ducted cooling and gas heater for year-round comfort.

Outdoors is just as impressive, with a single garage under main roof with side access, and a spacious side pitched-roof pergola perfect for entertaining, all surrounded by established gardens.

Start 2019 on a high note and have the keys to your new home by the time school goes back. Call Kies today for your own private viewing.

RLA 249396

**Upcoming Inspections**

Inspect by appointment, contact agent.

**Land Size**

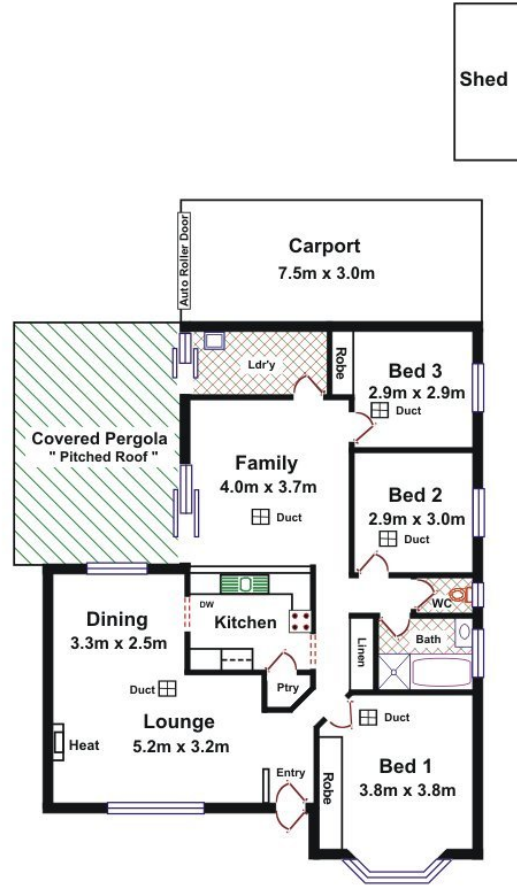
417 m2

**Kies Real Estate**

[enquiries@kies.com.au](mailto:enquiries@kies.com.au)

08 8523 3777

3A Adelaide Road, Gawler 5118



Shed

Area	M <sup>2</sup>
Living	117.52
Carport	22.50
Pergola	22.64
<b>Total Approx</b>	<b>162.66</b>

Please Note: Every care has been taken to verify the correctness of the areas and details used in this leaflet. No warranty or representation is given or made as to the correctness of the information supplied and neither the owners, illustrator nor the Agent accept responsibility for errors or omissions. The sketch is for illustration purposes only and intending purchasers should satisfy themselves independently regarding sizes, layout and location of the property. Please check with local council that all structures are approved by council.

