



RIVERTON - Country Living - Just Move In and Enjoy

\$324,950

Perfectly placed this 2008 built family home is located in the quaint township of Riverton. The property is within walking distance to local schools and shops, yet still enjoys the peace and quiet of a rural town.

Set on a very generous 849m², Ideal for the growing family this well presented home boasts an impressive 4 bedrooms all generous in size, including a large master with walk-in-robe and ensuite. As well as a formal entrance and lounge with bi-fold doors there is an open plan zone comprising of kitchen, meals and family living area. The huge kitchen is a delight for the budding chef in the family, complete with breakfast bar, ample cupboard space, walk in pantry and modern day appliances. The whole home is serviced by ducted reverse cycle air conditioning and a large slow combustion heater for them cold winter nights. As well as a 1.8kw solar system

Outside features a double carport under main roof, ample shedding and a massive 10.7m x 5.6m side verandah perfect for all your entertainment needs. The back yard is a blank canvas for you to create the gardens you want.

This home really is a must see for anyone in the market for a great family home with rural living. Call us today to arrange a private inspection.

RLA 249396

Upcoming Inspections

Inspect by appointment, contact agent.

Land Size

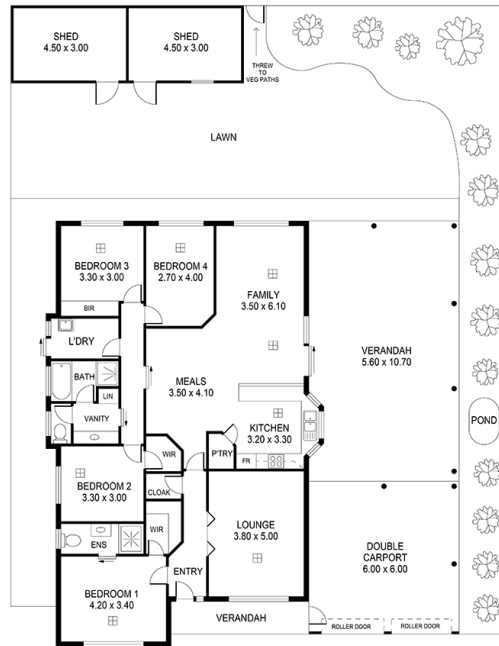
849 m²

Kies Real Estate

enquiries@kies.com.au

08 8523 3777

3A Adelaide Road, Gawler 5118



AREAS (Approx.)	m ²
LIVING	165.21
VERANDAHS	68.30
DOUBLE CARPORT	36.00
SHEDS	26.39
TOTAL	295.90

3 Gordon Street, Riverton

