



## Family Entertainer

\$379,950

Set on an impressive 902m2 this wonderful family home is perfectly located to local schools, parks and Gawler's main street filled with boutique shops and cafes, yet still enjoys the peace and quiet of a rural town.

Step inside to a conveniently flexible floor-plan compromising of 5 bedrooms (with the potential of a 6th Bedroom), 2 bathrooms, multiple living spaces as well as study area. A centrally located kitchen offers more than enough space to move whilst cooking up a storm plus has a large walk in pantry to match. Completed with formal lounge to the front and a family room to the rear means everyone gets their own space when they need it. The home is serviced by a huge gas wall furnace and ducted evaporative cooling.

Stepping outside it won't take you long to realise this is where the memories will be made. The huge paved outdoor entertaining area is the place where the family will be surrounded by manicured terraced style gardens for low maintenance living.

The opportunity to own a quality home with a quiet but central location that offers access to all amenities is rare. Call us today to arrange an appointment to view!

RLA 249396

## Upcoming Inspections

Inspect by appointment, contact agent.

## Land Size

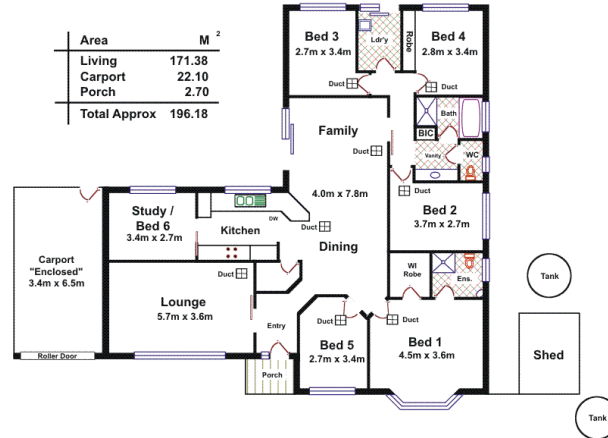
902 m2

## Kies Real Estate

[enquiries@kies.com.au](mailto:enquiries@kies.com.au)

08 8523 3777

3A Adelaide Road, Gawler 5118



Please Note: Every care has been taken to verify the correctness of the areas and details used in this leaflet. No warranty, or representation is given or made as to the correctness of the information supplied and neither the owners, illustrator nor the Agent accept responsibility for errors or omissions. The sketch is for illustration purposes only and intending purchasers should satisfy themselves independently regarding sizes, layout and location of the property. Please check with local council that all structures are approved by council.

