



### Opportunity Knocks!

\$284,950

Located in a quiet part of Elizabeth Vale, close to all amenities, schools, hospital and only 5 minutes from Munno Para and Elizabeth City shopping centres this neatly presented 3 bedroom property will make a wonderful home or investment.

Set on a great sized allotment of 859m<sup>2</sup>, this home features 3 huge bedrooms, a large lounge room, family/rumpus room and a spacious kitchen and meals area. The home is serviced by ducted reverse cycle heating and cooling and powered by 3 kw solar system. Outside adds further appeal to the property, with an enclosed carport with through access to a spacious 6m x 6m shed with power, a large rear veranda and a garden shed. The gardens are well established with an array of fruit trees and are low maintenance. The property also offers the added bonus of side access to the property ideal for a boat or caravan.

This home is ideal for first home buyers or investors looking to add to their portfolio. Call us today to arrange your private inspection.

RLA 249396

Disclaimer: Every care has been taken to verify the correctness of all details used in this advertisement. However, no warranty or representative is given or made as to the correctness of information supplied and neither the owners nor their agent can accept responsibility for error or omissions. Interested persons should seek their own enquiries.

### Upcoming Inspections

Inspect by appointment, contact agent.

### Land Size

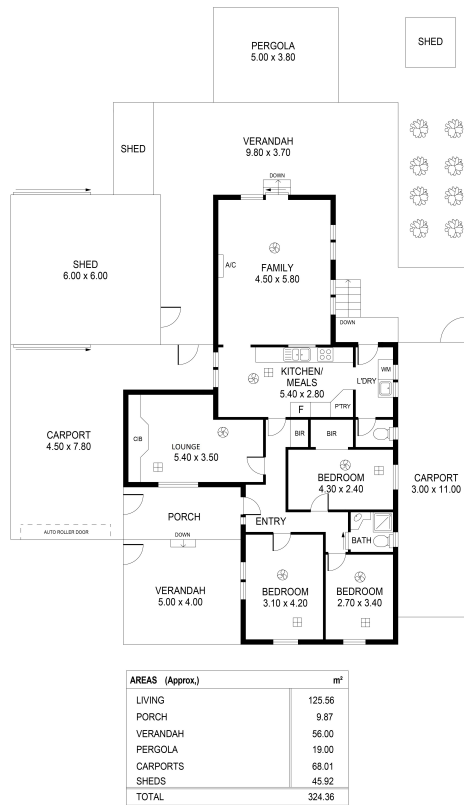
859 m<sup>2</sup>

### Kies Real Estate

enquiries@kies.com.au

08 8523 3777

3A Adelaide Road, Gawler 5118



13 Siddall Road, Elizabeth Vale

