



A Delightful Family Home With All The Trimmings!

\$494,950

Built in late 1998 this exceptional home offers family and executive living, boasting the finest of fixtures and fittings ? beautifully presented all within its unique design.

Set on 768m2, this property is located in the prestigious suburb of Evanston Park and is a stone's throw away from Trinity College, Starplex Recreation Complex and brand new shopping precincts.

The home consists of a magnificent 24 squares of living space. It includes 4 large bedrooms, an ensuite and walk-in-robe in the master king bedroom. The spacious 2 way family bathroom is situated between bedrooms 2, 3 and 4 bedroom 3 with built in robes all situated away from the family areas.

There are three separate living areas, a formal lounge at the front of the house, a spacious dining room adjacent to the kitchen and fabulous family/living room at the rear of the home. The kitchen is every home cook's dream, vast amounts of cupboard space, breakfast bar and walk in pantry.

The home has ducted evaporative air conditioning and gas combustion heater. All serviced by a 10kw battery stored solar system.

Why build when this amazing 24 square home is ready and waiting for you to move in!

Call today to arrange a private inspection. The property will not disappoint!

RLA 249396

Upcoming Inspections

Inspect by appointment, contact agent.

Land Size

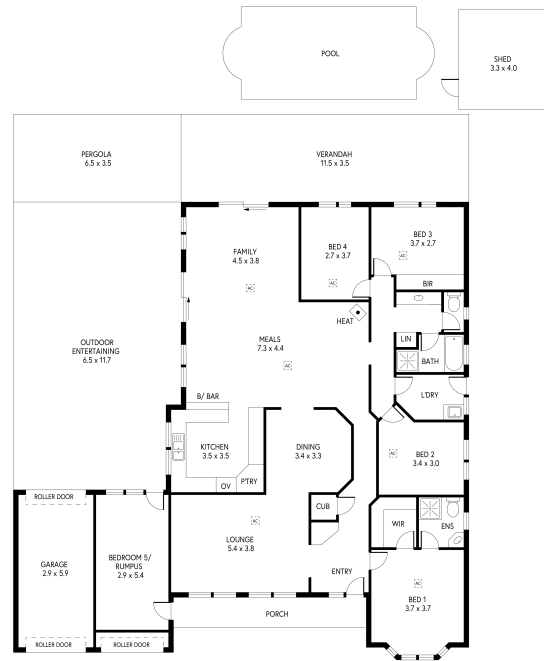
768 m2

Kies Real Estate

enquiries@kies.com.au

08 8523 3777

3A Adelaide Road, Gawler 5118



INTERNAL - 235.9 SQM
EXTERNAL - 161.9 SQM
TOTAL - 397.8 SQM

PRODUCED BY CLIQUECREATIVE

