



Opportunity Knocks!

\$269,950

Nestled in a quiet tree lined street between houses new and old, this solid brick home is located within walking distance to Lyell McEwin Hospital and serves as the perfect investment.

On offer is the possibility to subdivide (Subject to Council Consent) to extensively renovate the existing home or knock down and rebuild.

Situated on a great sized lot of 693m², this little gem features three huge bedrooms, a spacious lounge as well as a large kitchen and dining area.

Keep cool and warm all year round with evaporative ducted Air Conditioning as well as a Gas Heater.

Outside will draw you in just as much as inside; containing with an enclosed carport with a spacious 4.0m x 7.2m shed as well as a large rear veranda.

Also contained on this property is a Granny Flat with bathroom and kitchen facilities.

This home is ideal for first home buyers or investors looking to add to their portfolio with the possibility to subdivide (subject to Council consent).

Call us today to arrange your private inspection.

RLA 249396

Upcoming Inspections

Inspect by appointment, contact agent.

Land Size

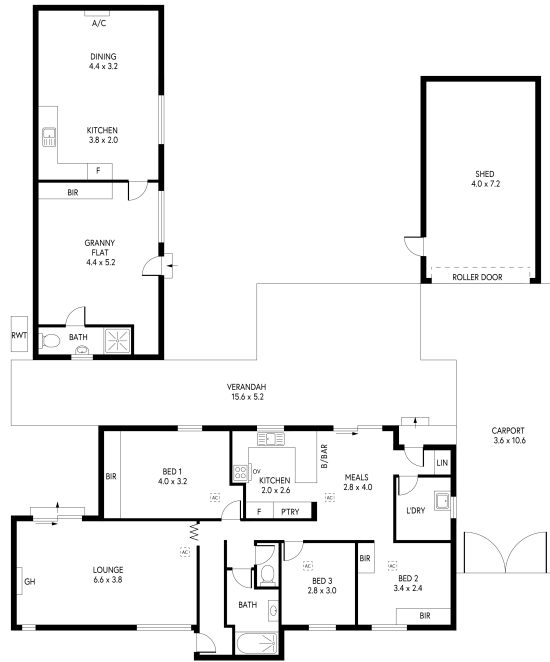
128 m²

Kies Real Estate

enquiries@kies.com.au

08 8523 3777

3A Adelaide Road, Gawler 5118



INTERNAL - 133.9 SQM
 EXTERNAL - 126.0 SQM
 TOTAL - 241.9 SQM

DESIGNED BY CLIQUECREATIVE