



More than meets the eye

\$219,950

This is a wonderful opportunity for the lucky purchaser to reap the rewards for a little bit of 'elbow grease' and vision.

The property offers a 3 bedroom home, 9mx6m and double carport all on a large established allotment. The home has recently been re-roofed and new gutters fitted, internally the home requires some refurbishment, but is fully functional as is, and has heating, cooling a modest kitchen, laundry and bathroom with separate toilet.

Outside there is a rear deck, a great 9mx6m shed with power and cement floor which has vehicle access through the double carport.

The property is currently tenanted on a periodic lease, so your choice to rent out or move in, either way this buy promises to be a wise investment.

Disclaimer

Every care has been taken to verify the correctness of the areas and details used in this leaflet. However, the plan is not a surveyed plan and the dimensions given are estimates only.

No warranty or representation is given or made as to the correctness of the information supplied and neither the owners nor the Agents can accept responsibility for errors or omissions.

Upcoming Inspections

Inspect by appointment, contact agent.

Land Size

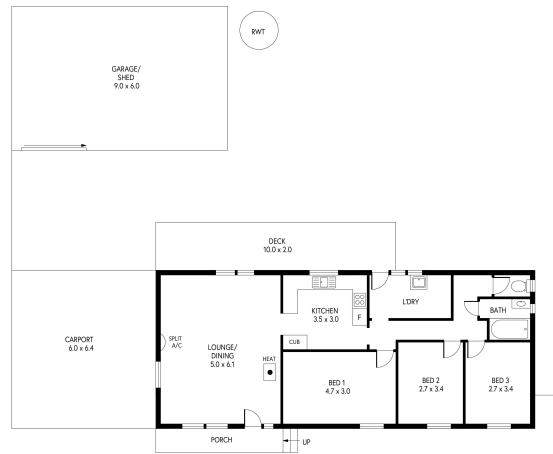
735 m2

Kies Real Estate

enquiries@kies.com.au

08 8523 3777

3A Adelaide Road, Gawler 5118



INTERNAL - 104.3 SQM
EXTERNAL - 177.7 SQM
TOTAL - 222.0 SQM

DESIGNED BY CLIQUECREATIVE