

**HEWETT - Check Out The Value 4 Bedrooms + Study + Shed on 735m2**

\$319,885

In a beautiful prime quiet street this 4 bedroom home on 735m2 offers you inviting private front gardens, formal entrance, separate study, master bedroom with good size ensuite and walk-in robe, formal lounge, central modern kitchen with breakfast bar, pantry and bulk head, big family room, dining room, beautiful outside paved undercover entertaining area, vehicle access to rear, 6m x 9m shed with power and cement floor, plus these fantastic extras:- double garage under main roof, ducted reverse cycle air-conditioning, keyed Alike Security doors, dead locks, window locks plus much more.

If you are looking for a quality 4 bedroom home in a prime location call now about this special property.

Kies Real Estate 8523 3777

RLA 61382

**Upcoming Inspections**

Inspect by appointment, contact agent.

**Land Size**

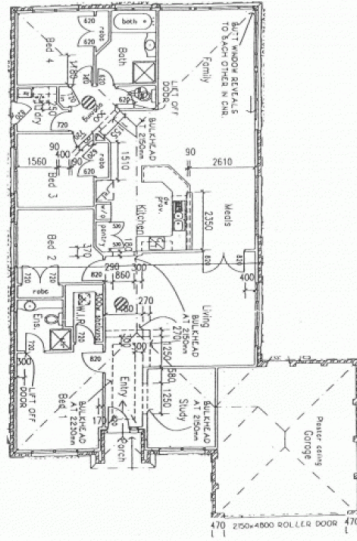
735 m2

**Kies Real Estate**

[enquiries@kies.com.au](mailto:enquiries@kies.com.au)

08 8523 3777

3A Adelaide Road, Gawler 5118



**Disclaimer**

Please note: Every care has been taken to verify the correctness of the areas and details used in this leaflet. However, the plan is not a surveyed plan and the dimensions given are estimates only.  
No warranty or representation is given or made as to the correctness of the information supplied and neither the owners nor the Agents can accept responsibility for errors or omissions

