

**HEWETT**

\$515,000

On a prime corner allotment with great outlooks, this stunning 4 bedroom home offers formal entrance, master bedroom with ensuite & walk-in robe, lounge, kitchen with a central servery, 6 burner gas cooker and a two-way walk-in pantry with garage access, formal dining, family room, home theatre and study. PLUS, Ducted reverse cycle air-conditioning, 6m x 9m shed, double garage, big entertaining area and 45,000ltr rainwater tank.

This is a fully established, spectacular home just waiting for you to move in and enjoy.

Call Kies Real Estate today on 8523 3777.

RLA 61382

**Upcoming Inspections**

Inspect by appointment, contact agent.

**Land Size**

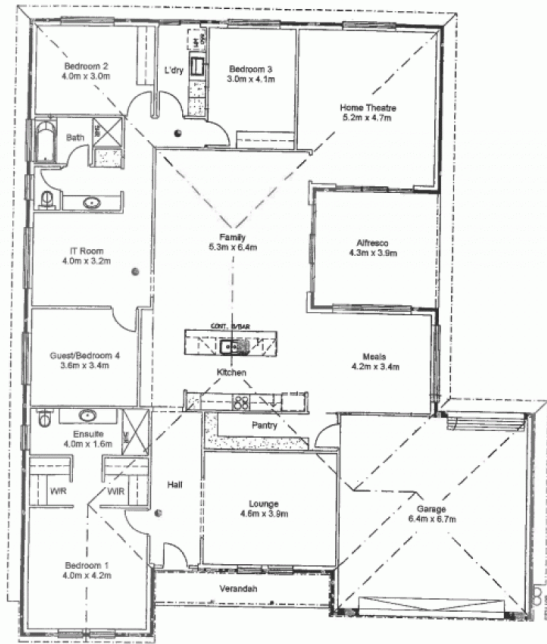
1195 m2

**Kies Real Estate**

enquiries@kies.com.au

08 8523 3777

3A Adelaide Road, Gawler 5118



**Disclaimer**

Please note: Every care has been taken to verify the correctness of the areas and details used in this leaflet. However, the plan is not a surveyed plan and the dimensions given are estimates only. No warranty or representation is given or made as to the correctness of the information supplied and neither the owners nor the Agents can accept responsibility for errors or omissions

