



Evanston Park - Position Perfect

\$519,950

Nestled at the end of a quiet cul-de-sac on an outstanding allotment, well over 1/3 Acre (1663m²), with sweeping rural views and boasting park-like manicured gardens, this Fairmont home was completed in 2008 and with over 30 squares of living this stunning home comprises of 4 spacious bedrooms all with built-in robes and main with walk-in robe and ensuite, together with a large study which could easily be used as the fifth bedroom if required. There are three separate living areas being the formal lounge/formal dining with fireplace, and entertainment/rumpus room and the huge family area with informal meals and magnificent kitchen. With neutral decor throughout this home is timeless and would accommodate any soft furnishings beautifully.

The home is serviced by evaporative ducted air-conditioning and gas ducted heating with fixtures and fittings of the highest standard.

Outside is a wonderful alfresco area allowing access through the double garage to the rear of the home. The gardens are truly amazing and beautifully established and immaculately maintained and with 37000 Litres of rainwater on site easily kept lush.

Seeing is Believing - A quality property in the perfect position.

View by Appointment

RLA 61382

Upcoming Inspections

Inspect by appointment, contact agent.

Land Size

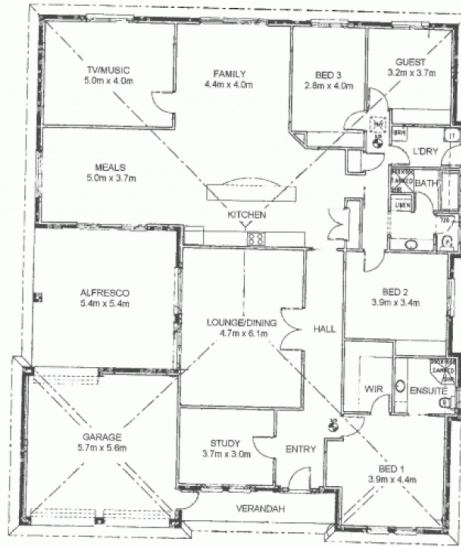
1663 m²

Kies Real Estate

enquiries@kies.com.au

08 8523 3777

3A Adelaide Road, Gawler 5118



Disclaimer

Please note: Every care has been taken to verify the correctness of the areas and details used in this leaflet. However, the plan is not a surveyed plan and the dimensions given are estimates only. No warranty or representation is given or made as to the correctness of the information supplied and neither the owners nor the Agents can accept responsibility for errors or omissions

