



### LYNDOCH - Family Living in a Superb Location

\$349,950

This quality home built in 2006 offers great family living on the doorstep to the Barossa Valley.

The home offers 3 double bedrooms, master with walk-in robe, ensuite and stunning bay window, large 3-way bathroom and luxury spa, spacious formal living area, kitchen with quality appliances and breakfast bar overlooking the open plan family/living/meals area, family room with sliding doors to outside for that great indoor-outdoor living and entertaining, great gable roof entertaining area fully concreted.

The home is complete with ducted reverse cycle heating and cooling, double garage under the main roof with panel lift door and is situated on a 585m2 allotment.

Don't miss the opportunity to buy your first, second or third investment home or even your next family home.

Call and book your appointment to view and buy a beautiful piece of the Barossa Valley.

RLA 61382

### Upcoming Inspections

Inspect by appointment, contact agent.

### Land Size

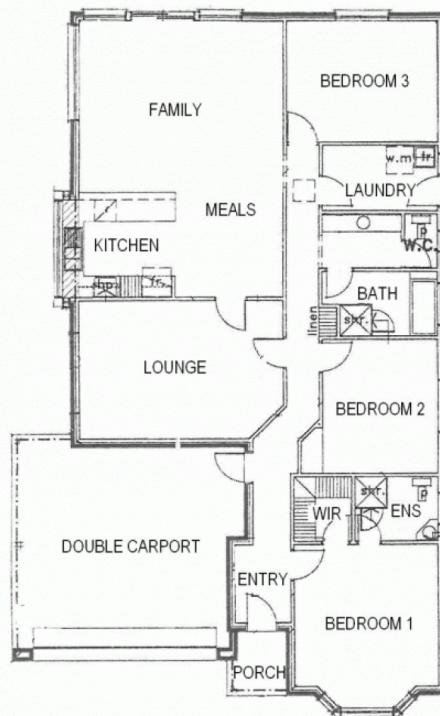
585 m2

### Kies Real Estate

[enquiries@kies.com.au](mailto:enquiries@kies.com.au)

08 8523 3777

3A Adelaide Road, Gawler 5118



Note: Floor Plan is not to scale.

