



### Family Home in a Beautiful Country Location

\$589,950

Situated on a very large 1306m<sup>2</sup> allotment in the quiet country town of Williamstown this wonderful property is conveniently close to schools, parks, local shops, cellar doors and only 15 minutes from both the beautiful Barossa Valley and the town of Gawler.

This home is immaculately maintained and presented, featuring 3 bedrooms ? all spacious with built-in-robos.

The living areas consist of an L-shaped formal lounge /dining area and a family / living area adjacent to the kitchen. The beautiful kitchen is spacious and well-appointed; with dishwasher, large breakfast bar and ample cupboard space.

The house is serviced by ducted evaporative air-conditioning and a large slow combustion heater, keeping you comfortable all year round.

Outside there is a huge rear verandah perfect for relaxing and entertaining which takes full advantage of the stunning established gardens surrounding the home, complete with the perfect vegie patch attracting an array of bird life.

Completing the property is large 12m x 6m workshop/garage with power and access, available for the lucky new owners to house a boat, caravan, or any number of toys !

Disclaimer: Every care has been taken to verify the correctness of a

### Upcoming Inspections

Inspect by appointment, contact agent.

### Land Size

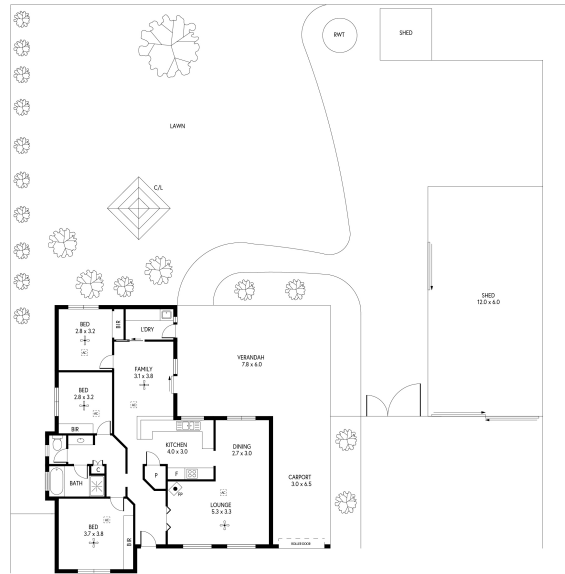
1306 m<sup>2</sup>

### Kies Real Estate

[enquiries@kies.com.au](mailto:enquiries@kies.com.au)

08 8523 3777

3A Adelaide Road, Gawler 5118



INTERNAL - 123.0 SQM  
EXTERNAL - 136.0 SQM  
TOTAL - 261.0 SQM

PRODUCED BY CLIQUECREATIVE

