



LYNDOCH - Superb Design, Executive Living

\$449,950

Built 2008 this exceptional home offers family and executive living within its unique design. Comprising of 4 double bedrooms plus study, main with deluxe ensuite with spa bath and double vanity.

No Expense has been spared in the construction with built-in cupboards in the laundry and even the formal lounge, not to mention some 42 cupboards in the kitchen and 2 dishwashers!! Together with impeccable fixtures and fittings throughout this home will impress the most fastidious of buyers. The 790m2 allotment has been well utilized and beautifully established, with perfect alfresco area, shedding and double garage under the main roof.

With extras galore and serviced by, self-cleaning, ducted evaporative air-conditioning, slow combustion heating, 3 phase power and a 2kw solar system, this wonderful home is 30 squares of luxurious living ??? complete and ready to go.

Call today to arrange an inspection that is sure to tick all your boxes.

RLA 249396

Upcoming Inspections

Inspect by appointment, contact agent.

Land Size

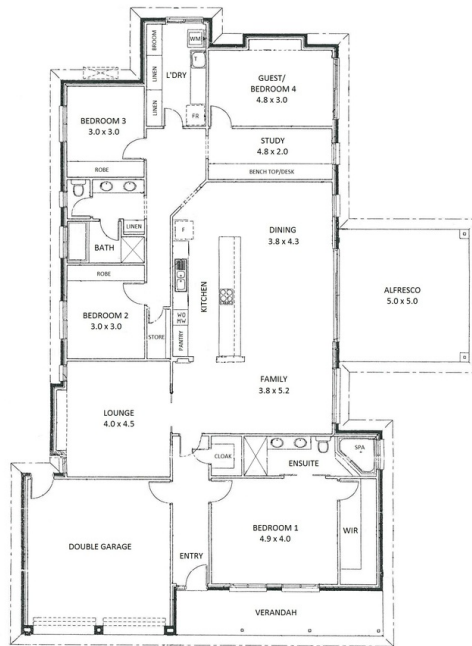
790 m2

Kies Real Estate

enquiries@kies.com.au

08 8523 3777

3A Adelaide Road, Gawler 5118



Note: Floor plan is not to scale. Dimensions are shown as estimates only.

