

**SOLD - MULTIPLE BUYERS LEFT OVER !!**

\$899,950

This family home has been intuitively designed for both functional family living and grand scale entertaining. Built in late 2008 this exceptional home offers space for everyone. Set on 5000 m2, this property is located in the wonderful town of Lyndoch in the heart of the Barossa Valley and is a stone's throw away from Gawler and all of its many amenities.

Ideal for the growing family, this home boasts an impressive four bedrooms, all very generous in size. Master with walk-in-robe and ensuite, the remaining 3 bedrooms are all located off a common hallway next to the family bathroom, bedroom 2 with walk-in-robe also, 3 and 4 both with built-in robes.

The home offers a very spacious formal lounge, there is an open-plan zone comprising of kitchen, meals, and family living area. The huge kitchen is a delight, complete with breakfast bar, walk in pantry and quality appliances. Together with a huge rumpus/games which was originally a home office with its own external access, could provide a 5th bedroom or an idyllic play room for the children.

The grand outdoor entertaining is also a star of the home, making the most of the natural light and overlooking the back yard, complete with café blinds for year-round enjoyment.

There is also full return access to the property, ideal for a boat, caravan or any other toys that are hard to manoeuvre.

RLA 249396

Upcoming Inspections

Inspect by appointment, contact agent.

Land Size

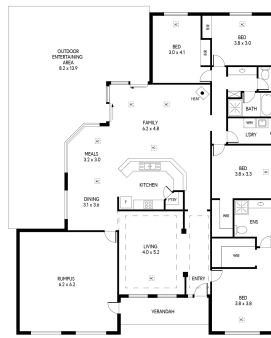
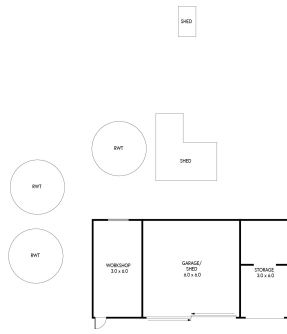
5002 m2

Kies Real Estate

enquiries@kies.com.au

08 8523 3777

3A Adelaide Road, Gawler 5118



INTERNAL - 242.2 SQM
EXTERNAL - 103.6 SQM
TOTAL - 405.8 SQM

DESIGNED BY CLIQUE CREATIVE

