



Private Living

\$449,950

Located in the 'Gateway to the Barossa Valley', this 1994 built property is situated on a large 807 m2 allotment and is conveniently close to schools, parks, shops and cellar doors.

You are only 15 minutes from both the beautiful Barossa Valley and Gawler, yet this property still offers the feel of country living.

Positioned in a quiet, very private cul-de-sac, this lovely home consists of an L-shaped lounge and meals area adjacent to the kitchen, complete with breakfast bar and ample cupboard space.

Boasting 3 bedrooms in total, the main bedroom with walk in robe with access to the family bathroom. Bedrooms 2 and 3 are situated at the rear of home next to the spacious family / living room.

The home heating and cooling is supplied via a ducted evaporative air conditioning and ducted heating and a slow combustion heater, all serviced with solar.

Outside there is a single carport under-main-roof, with through access to a 6m x 8m shed available for the new owners.

The opportunity to own a home with a quiet and private location that offers access to all amenities is rare. Call us today to arrange an appointment to view!

RLA: 249396

Upcoming Inspections

Inspect by appointment, contact agent.

Land Size

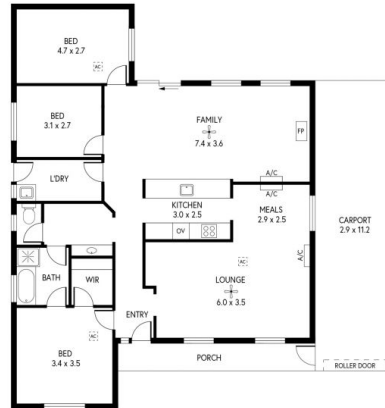
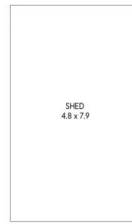
807 m2

Kies Real Estate

enquiries@kies.com.au

08 8523 3777

3A Adelaide Road, Gawler 5118



INTERNAL - 128.5 SQM
 EXTERNAL - 75.9 SQM
 TOTAL - 204.4 SQM

PRODUCED BY CLIQUECREATIVE

