



EVANSTON PARK - Great Investment Or Simply Downsizing

\$319,950

Situated on 480m² this beautifully presented home offers 3 good size bedrooms, master complete with bay window, ensuite, walk-in robe and ceiling fan, bedrooms 2 and 3 both complete with built-in robes. This home is definitely ???walk in, do nothing??? and is in a great location ??? so close to schools, shops, public transport and more.

This elegant home offers an open plan kitchen, living and dining area overlooking the stunning garden complete with established trees and entertainment area.

The home also boasts a formal entry with a formal lounge situated at the front of the home for those quieter occasions, the kitchen is complete with walk-in pantry and quality appliances, there is reverse cycle ducted heating and cooling, double garage with remote doors, 3.3 x 4.5 shed, fully established gardens, fruit trees and a stunning entertainment area.

This home would simply make for a wonderful investment or a family home.

RLA 249396

Upcoming Inspections

Inspect by appointment, contact agent.

Land Size

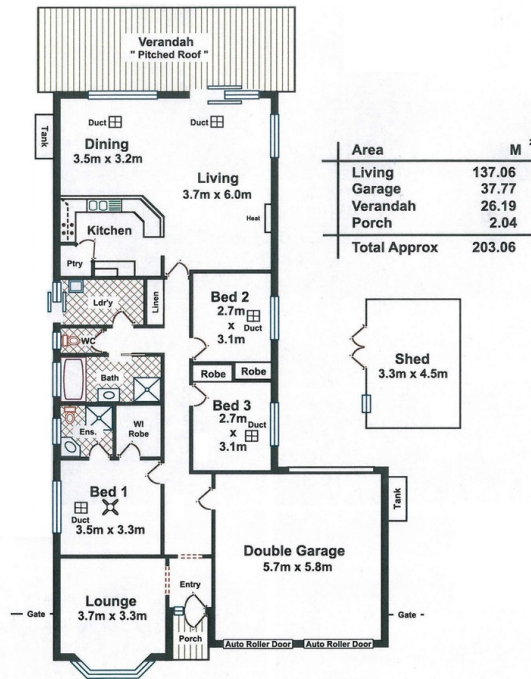
480 m²

Kies Real Estate

enquiries@kies.com.au

08 8523 3777

3A Adelaide Road, Gawler 5118



NOTE: Floor plan is not to scale. Dimensions are shown as estimates only.

