



CLEARVIEW - WOW 4 Bedrooms, Large Shed, 696m2 Allotment

\$379,950

Located only 15 minutes from the CBD of Adelaide close to all amenities is this stunning 1960's solid brick home. Offering outstanding views of the city lights at night and situated on an elevated allotment of 696m2 with 15.24m of street frontage this home has plenty to offer.

The home boasts 4 good size bedrooms, built-in robes to the master and second bedroom, spacious lounge, stunning formal entry, timber floors throughout, quality appliances, fabulous new kitchen/dining, tall ceilings, mains gas and provisions for dishwasher.

This home is simply ready to move into.

Outside offers single width, double length carport with drive through access to the 14mx7m shed which has power connected and a cement floor, great kids play area out the back, fully fenced yard and has great space outdoors.

Don't miss this opportunity to acquire such a property with a large shed so close to Adelaide.

RLA 249396

Upcoming Inspections

Inspect by appointment, contact agent.

Land Size

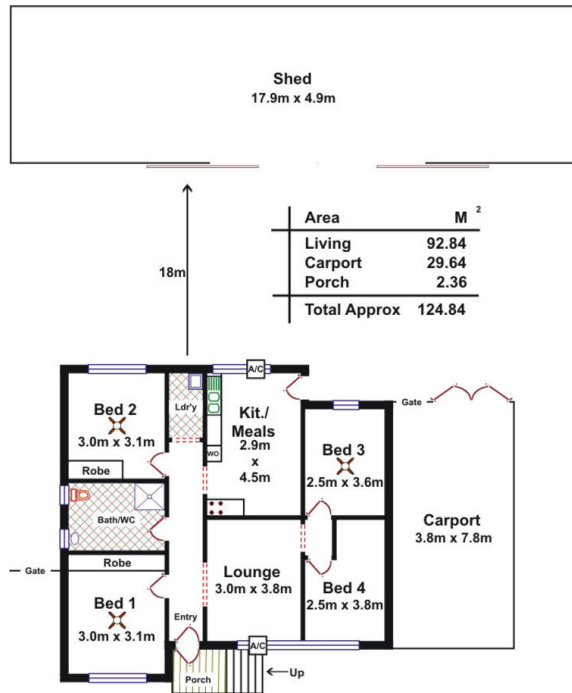
696 m2

Kies Real Estate

enquiries@kies.com.au

08 8523 3777

3A Adelaide Road, Gawler 5118



Please Note: Every care has been taken to verify the correctness of the areas and details used in this leaflet. No warranty or representation is given or made as to the correctness of the information supplied and neither the owners, illustrator nor the Agents can accept responsibility for errors or omissions. The sketch is for illustration purposes only and intending purchasers should satisfy themselves independently regarding sizes, layout and location of the property. Please check with local council that all structures are approved by council.

